




**ABBEY**  
MACHINERY



# Slurry Equipment

**TRUSTED BY GENERATIONS**

SINCE 1947

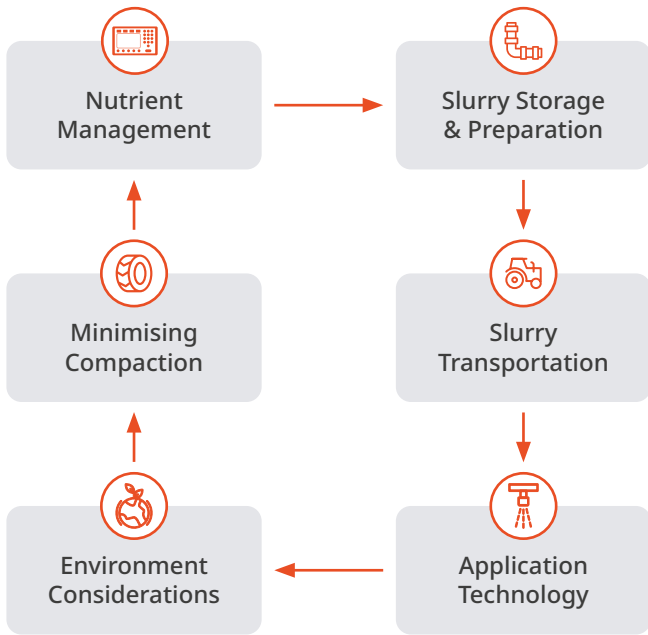
 00 353 (0)67 26677

 [info@abbeymachinery.com](mailto:info@abbeymachinery.com)

 [abbeymachinery.com](http://abbeymachinery.com)

## Our Background

Abbey Machinery is an Ag Tech company specializing in manufacturing of Total Cow solutions for farmers and related industrial product. Established over 75 years ago, we are a team of over 100 employees contributing to the shared expertise of Abbey. Quality, innovation, and customer focus drive production creating long lasting, efficient machines improving farm programs around the world. We focus on embracing sustainability and digitalization to generate value-added applications for our customers.



## Slurry Management System

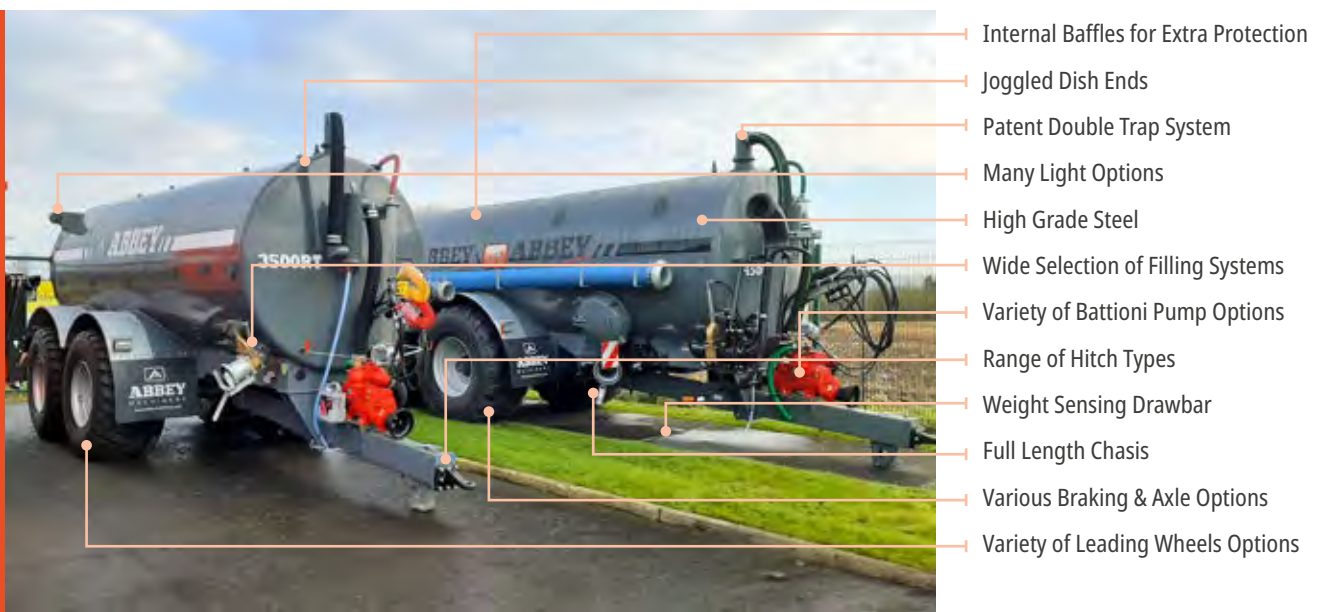
Mature cows typically produce 1.5-2 tons of organic matter per month. The value of this organic matter is often overlooked. Attention to detail in the timing of slurry application, weather factors during spreading, soil type, soil fertility, field aspect, proximity to water courses, the quality of the slurry and the method of application are all important. Getting the most from slurry involves adopting the appropriate management and application strategies to optimise its nutritional value and minimise any harmful effects to the environment.

Abbey Machinery have developed their own unique Slurry Management System. This includes a six-step model that centres on slurry preparation, transportation, environmentally conscious application, minimal soil compaction, nutrient sensing and precision application. All designed to help farmers get the most from slurry and reduce fertiliser bills.

## End-to-End Technologies

Abbey Machinery specialize in incorporating ag technology with our product range to develop the best solutions for our customers. Abbey Machinery partner with the top suppliers of agriculture technology in the industry to pair field tested tech with the top-quality engineering in Abbey machines. Abbey technology solutions help customers to easily use data to support precision farming.

Tanker technology options include NIR Live Sensing technology, ISOBUS solutions, GPS mapping, Multi-Stage Rapid Filling Arm, and Flow Meter controls to support the farmer in getting the most out of their nutrient dense slurry. Technologies allow operators to know exactly the organic nutrients that have been applied to the land.





# Abbey Tanker Range

## Choosing the Correct Tanker Model and Application System

- » The total annual volume of slurry to be applied.
- » The Horse Power of the tractors available.
- » Distance of the slurry storage area to the fields.
- » Soil aspect - hilly or flat.
- » Soil type - clay, loam, sandy, heavy/light, etc.
- » Standard, Recess, Tandem or Tri-Axle models.
- » Crop to be fertilised and timing of application (stage of crop growth).
- » Country legislation compliance.

## Life-Long Benefits

Abbey Machinery has been at the forefront of slurry management systems for decades. Their machines use the latest Battioni pumps known for their high performance and reliability, deep chassis support, collared dish ends, double trap pump protection systems, top quality axles, brand leading tyres including BKT and Alliance with a variety of fast filling and emptying options.

Quality is at the centre of Abbey Machinery production. Machines can be custom built to support your exact farm requirements. Machines are built in a new state of the art manufacturing facility in Toomevara, Nenagh, County Tipperary, Ireland.

Abbey Machinery make a range of 37 Slurry Tanker models: Standard, Recess Premium and Premium Plus, Tandem and Tridem tankers from 4,700L (1,100 gal) to 27,000L.

Machines are built for the most challenging tasks. Engineered for longevity they require low maintenance and are intuitive to use.

## SLURRY EQUIPMENT

☎ 00 353 (0)67 26677

✉ info@abbeymachinery.com

🌐 abbeymachinery.com





## Standard Tanker Range

Standard Tankers range from 4,710L (1,100 gal) to 9,120L (2,000 gal). Produced to the highest standards, Tankers include heavy duty barrels, collared dish ends (for improved barrel strength and support), Battioni Pagani pumps, heavy duty axles and patented double trap pump protection system.

Tankers are completed with a variety of pump options, hydraulic brakes, LED lights, 50cm (20 inch) service door, hydraulically operated heavy-duty outlet, inverted spreading plate, complete 15cm (6 inch) Jll point, 4.5m (15 ft) suction hose, two blanked-off Jll points and one blanked-off with 5cm (2 inch) wash tap. There are a wide variety of optional extras to customise your Tanker available.



## Super SD Tanker Range

Tankers range from 7,020L (1,600 gal) to 9,120L (2,000 gal) with all of the benefits of the Standard Tanker range combined with a unique parabolic weight sensing multi leaf spring for unrivalled comfort when towing the tanker on the road or in the field. Providing much smoother travel and reducing the transfer of stress and shock on both the tractor and tanker

## Recess Tanker Premium Range

These machines accomplish the most challenging tasks, are engineered for a long life and are easy to use. From 7,010L (1,600 gal) to 9,240L (2,000 gal) these tankers provide class leading technologies, which include full length chassis construction, weight sensing sprung drawbar and anti-movement internal baffles (for improved barrel strength and reduced surging of liquids in the tanker during transport).

New features on the Abbey Recess Tanker range include exhaust extension, galvanised mudguards along with Abbey branded oil and holder. The Recess Tanker Premium comes on 750/70/R26 wheels and includes lights on front mudguards and is Band Spreader ready



## Recess Tanker Premium Plus Range

The Abbey Premium Plus Recessed Tanker range is engineered using class leading specifications. Recessed with full length chassis support, parabolic weight sensing multi-leaf sprung drawbar, patented double trap system and collared dish ends - which give additional support to the cylinder for a longer Tanker working life. This market leading Recess Tanker is recognised as one of the best-balanced Tankers on the market due to extremely low ground pressure, excellent turning ability, low diesel consumption and requires surprisingly low horsepower for towing. The combination of multi leaf spring suspension, full chassis support, integrated axle baffles fortify Abbey Machinery's position as the leading Tanker and internal tank manufacturer.

Complete with a variety of pump options, hydraulic 420 x 180 brakes, LED lights, 60cm (24 inch) door, hydraulically operated heavy-duty outlet, inverted spreading plate, complete 15cm (6 inch) Jll point, 4.5m (15 ft) to 6m (20 ft) suction hose (depending on the model size), one blanked or Jll point, one 5 cm wash tap, 2 x quick attachments, lights on front mud guards and DM Band Spreader ready. There are a wide variety of optional extras available

*Model number refers to approximate capacity of cylinder before recessing. Some tanks, especially larger models and those with attachments may exceed the permitted axle weight by law in your local jurisdiction. You are strongly advised to check with your local licensing authority.*



## Tandem Tanker Range

Abbey Machinery offer two different Tandem Tanker ranges, which include Tandem and Tandem Recess Tankers. The Tandem Tankers range consists of six models with sizes ranging from 13,850L (3,000 gal) to 20,760L (4,500 gal) and the Tandem Recess Range consists of 4 models with sizes running from 13,990L (3,000 gal) to 20,580L (4,500 gal).

The Tandem Tanker range are built standard with a self-steer Bogie system, Parabolic Weight Sensing Sprung Drawbar, MEC 11,000 Pump, Hydraulic 420 x 180 Brakes

with 150 sq. Axle, LED Lights, Side Amber Lights, Power Brake System, Rear Hydraulically Operated and include Heavy Duty Outlet Valve, Inverted Spreading Plate, One Blank Fill Point with 2", Wash Trap, Two complete Quick Attach Fill Points, 24", Door & Mudguards, One Front Blank Jll Point, 20ft of 6", Suction House and a Band Spreader Bracketry. The Tandem range also include auto slack adjuster, bolt on hitch and bolt on galvanized mudguards as standard.

## Tridem Tanker Range

The Tri-Axle Tanker range is ideal for high output haulage well suited for the contractor and large-scale farmer market. The range consists of 5 models with sizes ranging from 18,170L (4000 gal) to 27,330L (6000 gal). This tanker range is provided as standard with front and rear self-steering and the option of forced steering. As with the Tandem range the Tri-Axle range has class leading qualities which include, full length chassis construction, weight sensing sprung drawbar and anti-movement internal bases. All Tri-Axle Tankers are constructed with the barrel mounted onto a full length independent folded chassis design providing additional strength to the machines.

Comes complete with a variety of pump options, air/hydraulic 420 x 180 brakes (with load sensing included on air only), LED lights, 60cm (24 inch) service door, hydraulically operated heavy-duty outlet, inverted spreading plate, power breakaway system, side-amber lights, complete 15cm (6 inch) Jll point, 6m (20 ft) suction hose, one blanked off Jll point, one 5 cm wash tap, 2 x quick attachments, lights on front mud guards and Band Spreader ready. There are a wide variety of optional extras available.



# Range Of Specifications

## Pump Systems

A wide choice of vacuum pumps is available depending on the tanker size, material to be spread and working conditions. Abbey Machinery source their pumps from Battioni Pagani, a global leader in pump design and manufacturing since 1953.



## Rotary Blade Vacuum Pumps 9,000L, 11,000L, 13,500L

These come complete with long life blades, crash protection system, forced lubrication, external oil level indicator, side outlets, exhaust elbow, 4-ways valve and check valve.

## Ballast Pumps

The Ballast Pump is a heavy-duty pump available for all Garda and Garda EVO pumps. It has increased structural resistance, reduced weight and size, newly designed high-performance air injection cooling system which enables continuous operation at low temperatures and at 70% range of vacuum. This allows longer running times at maximum vacuum (95%) as well. A 'Crash Protection System, is a sliding uange protection mechanism that prevents the housing or rotor breaking. The pump can easily be repaired cost irectively in the field.

# Speed of Operation

## Centivac Pumps

MEC 9,000L, MEC 11,000L, MEC 13,500L Centivac Garda 75 pump systems are available. Centivac pumps can be used to discharge slurry a distance away from the Tanker via the rain gun or when linked to an umbilical system.

## Turbo Evo Pumps

Garda Turbo Evo pump reduces filling time by 25%, spreading times by 45% and increases spread widths by 50% using high pressure spreading techniques. Not only does it fill the tank faster, but its unique impeller chops the slurry as it fills the tanker and also chops the slurry as it goes to the distributor or spread plate at the rear of the Tanker. Tanker filling time is significantly reduced, while also getting a higher fill level. Enables more loads to be filled and emptied, so the operator maximises their time and reduces load turnaround times.

## Pump Silencers

There are two systems available.

- » **Dust Filter** which primarily reduces the airborne dust particles from entering the vacuum pump to extend the life of the vacuum pump in dusty environments.
- » **Noise Reduction Silencer** which is primarily positioned to reduce and remove noise from the vacuum pump area of operation.



## Hitches

The hitch is the connection point between the tanker and the tractor. It is a key safety area. Abbey Machinery offer an array of hitch options: Ring Hitch, Swivel Ring Hitch and Spoon Hitch.



# Low Labour Options

## Filling Systems



### TANKER FILL POINTS

There are 4 fill point possibilities direct with suction hose to the Abbey Tanker. A new trend is 2 x 6", (150mm) fill points side by side which results in very rapid filling.



### HYDRAULIC CHANGE OVER

Hydraulic change over eliminates the need to exit the cab to engage the pump.



### SELF FILL ARMS 6" (150mm) & 8" (200mm)

150mm (6 inch) & 200mm (8 inch) loading arms that fold down and fill through a hopper, with the suction hose going from the hopper into the slurry. It allows

for filling without having to leave the cab of the tractor, allowing more loads to be spread per day.



### TURBO FILLERS

Tanker filling time is significantly reduced, while also getting a higher fill level in the tanker. Enables more loads to be filled and emptied so the operator maximises their time and reduces load turnaround times.

Improves filling times by as much as 35%



### BI-DIRECTIONAL ARM

Ultimate versatility, in that the filling arm can lower to the left or right which means you can fill through an auto fill hopper at either side of the Tanker.



### OVER HEDGE BOOM ARM WITH HOPPER

Ideal for loading field tankers with Top Fill Hatches. Rotates 270° allowing it to unload at both sides of the tanker.



### TOP FILLING HATCHES

These hatches enables the Tanker to be filled through the top opening from an independent pump filling system. Options include Manual Top Hatch, Hydraulic Top Hatch and Sliding Top Hatch.

### MULTI STAGE ARM

200mm (8 inch) filling arm sits neatly at the front of the slurry tanker, with 90% reduction in manual handling of heavy hoses. Its unique modular assembly makes it extremely versatile with various options available.

- » Robust construction.
- » It has a two-stage operation.
- » Very easy to manoeuvre to the correct filling locations.
- » Hydraulic Turbo Fill options.
- » Transport features include locking pin.
- » Filling versatility - Abbey hoppers; high or low transport tanker hoppers; open slurry pits and underground storage areas.
- » Functions gate valve, pump, change over and vent valve.



Reach	Maximum Reach Vertical Suction	Maximum Overall Reach	Maximum Suction Depth	Maximum Transport Height	Gross Weight
2.6m	1.75m	3.3m	3m	3.8m	558kg





**LIGHTS:** Visibility is key to safety. It is very important that local road laws in terms of lighting are adhered to - Side Lights, Rear Lights, Flashing LED Beacons and Work Lights are available.



**BRAKING SYSTEMS & AXLES:** The brakes are activated by air or hydraulic pressure. Air hydraulic brakes auto load sensing is available as an option.



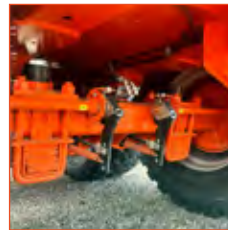
**FORCED STEERING:** This independent forced steering system links the Tanker steering system to the tractor, allowing steering in forward and reverse travel directions.



**HYDRAULIC LOAD SENSING:** On specific hydraulic systems, hydraulic load sensing (or power beyond) makes sure oil flow is provided as needed. This is a more power and fuel-efficient hydraulic system, providing oil on demand.



**WHEELS:** Wheel choice is critical for the safe use of the Tanker in the field and on the road. Choice of wheel is impacted by tanker size and type, quantity of road to field work to be carried out, field type, soil type and crop type. The



**TANDEM TANKER SUSPENSION:** Fitted with a robust self-steering multi-leaf spring bogey. It provides optimum weight distribution, stability and comfort and also enhances the tanker maneuverability. Spring sets are

wheels carry the weight of the load, so always abide by the appropriate manufacturers tyre pressure.

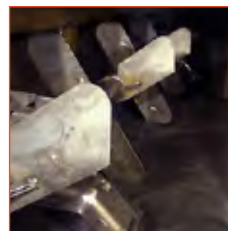
also available. There is the choice of forced steering systems which impact maneuverability, wear and tear and safety.

## Specialist Tankers



**LAND MANAGEMENT SYSTEM:** When emptying a Tanker on hill-side locations, emptying the Tanker fully can sometimes be a challenge. Abbey Machinery's land management system has a unique pipework configuration in the front

of the Tanker allowing the Tanker to fully empty when going downhill.



**INTERNAL WHISK:** Internal paddle whisk that agitates slurry while in transport, with a hydraulic drive to keep the product liquid, in suspension and prevents materials sedimenting at the base of the tanker. All the slurry is stirred and

the dry matter remains in suspension in the Tanker. This allows the Tanker to be completely emptied when spreading.



**DUST SPRINKLER SYSTEM:** Sprinkler system at the rear of the tanker. Ideal for dust suppression, road work and extending the volume of liquid spread from the tanker.



**HEAVY DUTY LINKAGE:** When adding heavier applicators to the rear of the Tanker, Abbey Machinery has an option to upgrade to the chassis for additional support along with heavy duty linkage.



**REAR HYDRAULIC LINKAGE:** The linkage allows for the quick release and disconnection of the applicator from the linkage, leaving the rear mounted hydraulic linkage frame available to recouple to another Abbey applicator system when needed.



**VOGELSANG INLET CHOPPER:** Rota-Cut inlet chopper fitted with stone trap housing and quick attach 6" valve. Ideal to rapidly chop fibrous material as it enters Tanker to better prepare slurry for spreading through an Applicator.



**WEIGHT TRANSFER SYSTEM:** Abbey Machinery have developed a system with an internal partition that retains sufficient liquid in the front part of the tank. This weight transfer has a major effect on the hitch and increases the tractor traction, especially on hilly ground. The internal wall in the tank is positioned in order to spread enough weight to the front part of the Tanker. The slurry at the rear of the Tanker is forced to empty first and then the front compartment empties last. When the slurry reaches the level of the internal wall, the liquid in the front compartment flows into the rear compartment. When filling, both compartments of the Tanker are filled at the same time.



**APPLICATOR MOUNTING BRACKETRY:** Recess Tankers are DM Band Spreader and Agri Pro Bracketry ready as standard. Premium Plus Trailing Shoe and Shallow Disc Injector ready bracketry are available upon request.



**LEVEL INDICATORS:** Sight Glass to indicate the end of filling. 100mm Front Level Indicator to show the volume of slurry when the tanker is filling and emptying.



**MUD FLAPS:** Branded front and rear mud flaps options which provide additional tanker hygiene.



**CENTRAL GREASING BLOCK:** Now available on Tandem Tankers is a central greasing block. This helps to simplify maintenance, lengthen working life and make the Tanker more reliable.



**TOOL BOX:** Keeping all your support materials for spreading in one place, helps give great peace of mind. Plastic or metal tool box options available.



**WASH TAP:** Wash tank and tap for hand hygiene on the go.



**STONE TRAP:** Stone trap with bauer coupling. Located at the base of the Tanker at the rear below the barrel of the Tanker to catch any unwanted stones and other debris.



**DOOR OPTIONS:** To facilitate internal maintenance, Abbey equip their tankers with large doors assembled on hinges. There is also the option of a fully opening rear door on some tanker sizes.

## Tanker Electrics



**DIVERTER:** Provides a simple solution to reduce the number of tractor hydraulic services needed to power multiple functions on a tanker.



**FULL ELECTRICS:** An electronically controlled multi-screen system for tanker hydraulic functions, powered via a filtered, load sensing hydraulic system. Automated features like head land U-turns are available on request.



**FLOW CONTROL:** Accurate application control, precision spreading and significantly improved use of the slurry. Options include:

- » Flow monitoring to monitor slurry flow (in cab monitoring of the m<sup>3</sup>/ha discharge rates).



**TOGGLE SWITCH CONTROLLER:** An electrically operated control system for tanker hydraulic functions via a non load sensing valve bank and simple switch box.

- » Flow metre to control slurry flow (in cab control of the m<sup>3</sup>/ha application rate using target rate. Manual control also available).
- » Flow monitor to monitor slurry flow (displays application rate), in cab monitoring of the m<sup>3</sup>/ha application rate, allowing forward speed matching.

## SLURRY EQUIPMENT

☎ 00 353 (0)67 26677

✉ info@abbeymachinery.com

🌐 abbeymachinery.com



**NIR SENSING:** Abbey Machinery's latest technological development uses near-infrared (NIR) technology. A light beam within the NIR sensor is directed into the slurry pipe. Some of the light is absorbed by the liquid, while the reflected part is captured by the sensor. Thousands of readings are taken each second and relayed to a processor computer to determine the live N, P, K and DM content of the slurry.

One benefit of Abbey Machinery's NIR sensor is to allow farmers to know exactly how many kilograms of nitrogen, potassium or phosphate have been applied to their land (site-specific when combined with a GPS system), which helps to reduce artificial fertiliser inputs. Its precision technology is at its best.

## Benefits of Agitating Slurry

Abbey Machinery's engineering team have developed a fleet of slurry agitation pumps designed to operate under the toughest conditions. Mixing slurry into a homogenous mix (liquids and solids) helps to develop the very most from the nutrients in the slurry as N, P and K settles in the tank. It is only through the agitation process that these nutrients are blended into the homogenous mix.

### Tornado Pumps

- » Quick attach linkage.
- » Hydraulic positioning.
- » No need to remove PTO points between slurry pits.
- » Locking device on top Jll models for better mixing.
- » Increased manoeuvrability for easy manhole access.
- » Impeller design facilitates rapid mixing.
- » Facilitation for PTO attachments.
- » Bolt-on options easily attached.
- » Easy access to gearbox and driveline.
- » Wide angle rotation and uninterrupted performance of the jetter nozzle, maximising under surface agitation and mixing.



### Features

- » Fully galvanised to extend working life.
- » Shear bolt protection on all models.
- » Heavy duty gear box for toughest working conditions.
- » Self-lubricating cylindrical rubber bearing supports impeller.
- » High quality steel shafts used.
- » Tornado 5000 and Rapid models have high output impellers.

### Rapid Pro Plus

- » High output impeller.
- » 150mm (6") feed to Jetter Nozzle.
- » Fast lower link hitching (no stand legs to set).
- » Tilt ram lock with check valve for extra stability.
- » Telescopic height adjustment.
- » Finger-tip map adjustment possible at full pump output.
- » High speed optional gear box available with HD shaft.
- » Rugged body design to extend life.
- » Increased durability on hinged points.
- » Increased flexibility with left side operation.
- » Large drive lines to cope with increased demands.
- » Increased access to lower housing.

### PUMP SPECIFICATIONS

	HP Requirements	Quick Attach Bar	Hydraulic Top Link	Linkage	Overall Depth	Large Base High Output	Number of Hydraulic Rams
Tornado 3000	75+	✓	✓	3-Point Linkage	2.24m		1
Tornado 4000	100+	✓	✓	3-Point Linkage	2.24m		1
Tornado 5000	120+	✓	✓	3-Point Linkage	2.24m	✓	1
Rapid Plus	150+	✓		2-Point Linkage	2.24m	✓	2

# Abbey Machinery Tankers Data Sheet

Model	Approx Capacity m <sup>3</sup>	Approx Capacity gal	Lite Capacity L	Dished End Size Inch	Barrel Length m	Overall Width mm	Overall Width Imperial	Approx overall height (18" hook) mm	Overall Length without Splashplate mm	Pump Capacity L/min	Standard Hose Length m	Sprung Drawbar	Back Door Size Inch	Turning Circle m	Unladen Weight kg	Wheel Size STD	Alternative Wheel Overall Width mm	Options
<b>STANDARD RANGE</b>																		
1100	4.71	1100	4.710	54	3.5	2500	98.5"	2549	5507	9000	4.58	N/A	20	4.084	1600	550/60x22.5	400RX22.5	540/70R24
<b>PREMIUM PLUS RECESSED RANGE</b>																		
1300	5.78	1300	5.780	60	3.5	2500	98.5"	2777	5554	9000	4.58	N/A	20	3.983	2100	550/60x22.5	2655.00	540/70R24
1600	7.02	1600	7.020	60	4.16	2548	100.3"	2885	6160	9000	4.58	Optional	20	4.489	2400	550/60x22.5	2657.00	2628
2000	9.12	2000	9.120	68	4.27	2548	100.3"	3080	6270	9000	4.58	Optional	20	4.489	2600	550/60x22.5	N/A	N/A
<b>PREMIUM RECESSED RANGE</b>																		
1600	6.60	1600	6.600	60	4.16	2550	100.3"	2983	6358	9000	4.58	Standard	20	4.590	2810	750/70R26	N/A	N/A
2000	8.55	2000	8.550	68	4.27	2550	100.3"	3180	6394	9000	4.58	Standard	20	4.590	3440	750/70R26	N/A	N/A
1650	7.02	1650	7.020	68	4.5	2606	102.6"	3032	6427	9000	4.58	Standard	20	4.877	3860	800/65 R32	N/A	N/A
2050	9.24	2050	9.240	68	4.61	2606	102.6"	3239	6453	9000	4.58	Standard	20	4.877	3900	800/65 R32	N/A	N/A
<b>PREMIUM PLUS RECESSED RANGE</b>																		
1600R*	7.02	1600	7.020	60	4.17	2598	102.3"	2988	6343	9000	4.58	Standard	24	4.849	2810	800/65 R32	750/70 R26	900/60 R32
2000R*	9.24	2000	9.240	68	4.27	2598	102.3"	3195	6408	9000	4.58	Standard	24	4.848	3240	800/65 R32	2550	N/A
2250R*	10.46	2250	10.460	72	4.62	2598	102.3"	3293	6720	11000	6.10	Standard	24	4.849	3700	800/65 R32	N/A	2598
2500R*	11.26	2500	11.260	72	4.88	2598	102.3"	3335	6979	11000	6.10	Standard	24	5.036	4000	800/65 R32	N/A	2598
2750R*	12.76	2750	12.760	72	5.13	2598	102.3"	3342	7341	11000	6.10	Standard	24	5.330	4580	800/65 R32	N/A	2598
3000R*	13.84	3000	13.840	72	5.46	2598	102.3"	3343	7976	11000	6.10	Standard	24	5.339	4680	800/65 R32	N/A	2598
<b>TANDEM RANGE</b>																		
3000T	13.85	3000	13.850	72	5.46	2910	114.6"	3375	7439	11000	6.10	Standard	24	5.155	6760	710/50 R26.5	650/60R22.5	650/55R 26.5
3500T	15.75	3500	15.750	78	5.44	2910	114.6"	3568	7613	11000	6.10	Standard	24	5.162	7000	710/50 R26.5	2650	2852
4000T	18.24	4000	18.240	78	6.27	2910	114.6"	3540	8400	11000	6.10	Standard	24	5.833	7320	710/50 R26.5	2650	2852
4500T	20.76	4500	20.760	78	7.11	2910	114.6"	3614	9256	11000	6.10	Standard	24	6.092	8100	710/50 R26.5	N/A	2852
<b>TANDEM RECESSED RANGE</b>																		
3000RT*	13.99	3000	13.990	72	5.9	2773	109.2"	3287	7783	11000	6.10	Standard	24	5.137	6950	710/50 R26.5	2653	N/A
3500RT*	15.82	3500	15.820	78	5.69	2773	109.2"	3445	7808	11000	6.10	Standard	24	5.279	7300	710/50 R26.5	2653	N/A
4000RT*	18.07	4000	18.070	78	6.44	2773	109.2"	3519	8571	11000	6.10	Standard	24	5.880	7720	710/50 R26.5	2653	N/A
4500RT*	20.58	4500	20.580	78	7.28	2773	109.2"	3528	9420	11000	6.10	Standard	24	6.003	8800	710/50 R26.5	2653	N/A
<b>LARGE WHEEL RT</b>																		
3500RT*	15.82	3500	15.820	72	6.63	2892	113.8"	3385	8598	11000	6.10	Standard	24	5.279	7300	750/60R30.5		
4000RT*	18.07	4000	18.070	78	6.44	2892	113.8"	3510	8552	11000	6.10	Standard	24	5.880	7720	750/60R30.5		
4500RT*	20.58	4500	20.580	78	7.28	2892	113.8"	3631	9420	11000	6.10	Standard	24	6.003	8800	750/60R30.5		
<b>TRIDEM RANGE</b>																		
4000TRI	18.17	4000	18.170	72	7.3	2910	115"	3413	9250	11000	6.10	Standard	24	6.450	9600	710/50 R26.5	560/60 R22.5	650/55 R26.5
4500TRI	20.8	4500	20.800	78	7.11	2910	115"	3542	9290	11000	6.10	Standard	24	6.24	10300	710/50 R26.5	2722	2850
5000TRI	22.77	5000	22.770	78	7.77	2910	115"	3539	9880	11000	6.10	Standard	24	6.311	10760	710/50 R26.5	2722	2850
5500TRI	24.8	5500	24.800	78	8.41	2910	115"	3600	10437	11000	6.10	Standard	24	6.5	11260	710/50 R26.5	2722	2850
6000TRI	27.33	6000	27.330	78	9.29	2910	115"	3636	11409	11000	6.10	Standard	24	7.186	11320	710/50 R26.5	2722	2850

\* Model number refers to approximate capacity of cylinder before recessing.

## WHEEL PATTERN GUIDE

