




**ABBEY**  
MACHINERY



# Feed Equipment Guide

**TRUSTED BY GENERATIONS**

SINCE 1947

 00 353 (0)67 26677

 [info@abbeymachinery.com](mailto:info@abbeymachinery.com)

 [abbeymachinery.com](http://abbeymachinery.com)

## Our Background

Abbey Machinery is one of Ireland's largest, oldest and most respected manufacturers of agricultural equipment. Established in 1947 by the Cavanagh family, a family with a long tradition in agricultural engineering, dating back to the 19th century.



## Feed Management System

Abbey Diet Feeders unique chopping and mixing action helps the animal to digest the maximum amount of nutrients from the feed they have eaten, to drive performance and even to reduce environmental emissions - from both nitrogen and methane. This raises feed efficiency improving milk and meat yield per kg dry matter intake.

When the TMR contains the correct balance of ingredients, along with the appropriate amount of roughage (quality long effective fibre) it enhances feed intakes, settles the rumen to absorb more nutrients from the ingested feeds and raises animal performance and health.

### FEED MANAGEMENT TRACKING

### FLEXIBILITY

Easily monitor and amend feeds.  
Share feeding information with advisors and nutritionist.  
Diet Feeder Maintenance. Records quantity of loads and auger revolutions. Schedule machine maintenance.

### STOCK & INGREDIENT TRACKING

### EARLY WARNINGS

Track daily use of all feeds.  
Gives warnings when running out of feeds.  
Assists feed stock management so as not to run out and also no need to over-stock.

### OPERATOR TRACKING

### ACCOUNTABILITY

More accurate loading and if there are multiple operators it will show their loading accuracy. Encourages accurate loading.  
Easily adjust rations for Dry Matter Intake (DMI).

### MANAGE FEED COSTS

### COST ANALYSIS

Compare intended ration against ration fed.  
Can measure Dry Matter Intakes and feed costs per animal.  
Margins over feed costs.  
Calculate income over feed costs.

### SAVE TIME

### MORE TIME

Easily change group numbers.  
No need for manual records.  
Ultimate accuracy at your fingertips.  
Feed exact amounts accurately.

### PERFORMANCE

### MORE MONEY

More accurate diet feeding results in better yields, milk solids, and live weight gain in cattle.  
Healthier livestock through more accurate feeding.  
Lower cull rate and vet bills.



## End-to-End Technologies

Abbey machines are renowned for longevity, all with minimal maintenance while engineered to maximise user experience. Abbey Machinery have added a collection of smart technology to their equipment, including Digi Star TMR tracking, COMER planetary transmissions, extendable knives and unique low auger profiles.

Abbey machines cater for the 'Total Cow' from one end to the other; Precision Diet Feeders, Grassland Toppers, Fertiliser Shakers support the front end of the cow. Environmentally friendly Slurry Application Technologies, Slurry Pumps and Farmyard Manure Spreaders support the rear end of the cow.



# Abbey Diet Feeder Range

## Long Lasting Efficiency

Abbey Machinery has been at the forefront of feed and slurry management systems for decades. Machines use the latest technology and best manufacturing practices resulting in machines that will last generations without issues.

Abbey's Diet Feeder Range will support all farmer needs from compact introductory machines to larger, industrial size machines all to better improve your feed management system and improve the health of your herd and your bottom line.

Quality is at the centre of Abbey Machinery production. Machines can be custom built to support your exact farm requirements. Machines are built in a new state of the art manufacturing facility in Toomevara, Nenagh, County Tipperary, Ireland.

## A Unique Range of 17 Vertical Auger Diet Feeders (From 8 to 33.5 Cubic Metre Capacity)

- » Unique low auger profiles.
- » Inflected top knife for improved bale processing and mixing time.
- » Extendable knives and two counter knives for improved processing time.
- » Gear box is mounted high up into the auger for guaranteed stability and working life.
- » Industry leading exit space in their feed outdoors for rapid feed-out time.
- » Door wedge to improve feed flow during feed discharge.
- » Variety of door locations and feed-out options.
- » Single, twin, tri-auger and plus options.
- » Machines can be customised to suit farm.

## Choosing The Correct Diet Feeder Model

- » The total annual volume of feed to be supplied.
- » The Horsepower of the tractors available.
- » The height and width of feeding sheds.
- » Type of feed ingredients to be mixed.
- » Quality of feed to be mixed.
- » Size of herd and growth forecasts.
- » Country legislation compliance.
- » TMR plan.

### HORSEPOWER GUIDE (APPROX)

Standard	Auger 25 Rev at 540
Two Speed Gearbox	Single auger 75-80hp Single auger with reduction gear box 65hp Twin auger 120hp Twin auger with reduction gear box 90hp
Two Speed Box	Low speed 19 – 20 rev at 540 High Speed 29-30 at 540





## Vertical Auger Diet Feeder Range

Abbey is Ireland's leading producer of Vertical Auger Diet Feeders and has an extensive range including Single, Double and Tri Auger models. Abbey Diet Feeders are constructed on a 20mm base plate, fit with COMER planetary transmission, and include a Digi-Star weighing system fitted as standard on each machine.

### Each model includes:

- » Unrivalled mix quality, proven in complete trials.
- » Unique tub design which allows complete movement and mixing of feeds.
- » 20mm base plate, 15mm auger flight, 20mm wear plate on most models (option of 22mm auger).
- » Low profile auger reduces horsepower and gives greater stability.
- » Auger flight design reduces HP demands and rapidly mixes feeds - reducing fuel use.
- » Door sizes are designed to optimise feed out and reduce feeding time.
- » Digi-Star system is robust, easy to use, versatile and now includes a TMR Tracker option.
- » Abbey Diet Feeders are designed to work under harsh, dry, and wet conditions and include superior extended warranty on both weighing systems and gearbox.





## Single Auger Diet Feeders

The single auger feeders have a unique tub design with a 20mm base plate, 15mm auger flight and 20mm wear plate on most models (option of 22mm auger).

The low-profile auger reduces horsepower and gives greater stability. The single auger includes a raised top knife. The auger flight design reduced horsepower demand while rapidly mixing feeds. Door sizes are designed to optimise feed out and reduce feeding time. Twin wheel axle are standard on most models for improved stability.





## Single Auger Diet Feeder Parts



### A: Single Tub

8m<sup>3</sup> - 14.5m<sup>3</sup> with unique rolled body design for fast and efficient blending of all feed ingredients.



### C: Door Options

Side, front and rear options to discharge feed.



### E: Discharge Elevator

Hydraulic discharge conveyors can be fitted to side door model vertical feeders to allow feed into bunkers.



### G: Corner Gearbox

Uniquely integrated to the auger for better stability and protection.



### I: Brakes

Hydraulic brakes.



### K: Knives

Serrated knives to ensure a fast and comprehensive blend of all ingredients.



### B: Counter Blades

These hold the material in position, reducing chopping time and wear of the barrel.



### D: Mixing Auger

One 15mm heavy duty auger to ensure perfect blend.



### F: Tyres

Wide range of leading brands available for twin wheels 235/ 75R X 17.5.



### H: Narrow Frame

Fits through farm passageways.



### J: Top Retaining Ring

Option for overflow ring to protect dry matter being thrown over during the mixing process.



### L: 4-Point Weighing System

Included as standard on Abbe Machinery Diet Feeders.



## Twin Auger Vertical Feeders

Abbey manufacture an extensive range of Twin Auger Vertical Diet Feeders from 15m<sup>3</sup> to 30.5m<sup>3</sup>. They are ideal for customers wishing for capacity with stability and quality of mix or customers who wish for extra capacity without extra height. The proven Abbey Twin Auger provides excellent mix quality and a choice of discharge options to suit all applications for the modern farmer.

Despite their large capacity they require lower HP than other Feeders. The machine's design and low height provides ease of manoeuvrability in narrow feed passageways and low sheds. The machines include future proof technology with a DigiStar weighing system. All Twin Auger machines include a Comer heavy duty gear box and four-point weighing system. The Twin Augers are ideal for customers wishing for larger capacity while navigating narrow sheds.

- » Provides excellent mix quality and a choice of discharge options.
- » Despite their large capacity they require lower HP than other Feeders.
- » The machine's design and low height provides ease of manoeuvrability in narrow feed passageways and low sheds.
- » Superior mixing ability and even distribution resulting in top class mix.
- » Future proof technology with Digistar weighing system.
- » Comer heavy duty gear box and four-point weighing system.
- » Ideal for customers wishing for larger capacity.





## Twin Auger Vertical Feeder Parts



### A: Twin Tub

Tubs range from 15m<sup>3</sup> to 30.5m<sup>3</sup>.



### C: Independent Chassis

Electronic scales with four weigh bars.



### E: Discharge Conveyors

Hydraulic discharge conveyors can be fitted to side door model vertical feeders to allow feed into bunkers.



### G: PTO Shaft

With shear bolt protection.



### I: Counter Blades

These hold the material in position, reducing chopping time and wear of the 8mm barrel.



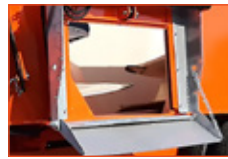
### K: Knives

Serrated knives (on each auger) to ensure a fast and comprehensive blend of all ingredients.



### M: Tyres

Wide range of leading brands available for for the dual axle system.



### B: Hinge Trays

Allow material to be dropped directly onto the floor or at varying heights.



### D: Door Options

Side, front and rear options to discharge feed.



### F: Mixing Auger

Two vertical 15mm heavy duty augers to ensure perfect blend.



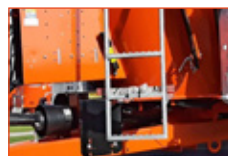
### H: Corner Gearbox

Uniquely integrated to the auger for better stability and protection.



### J: LED Lights

To improve visibility.



### L: Ladder

For easy access and viewing of the tub.



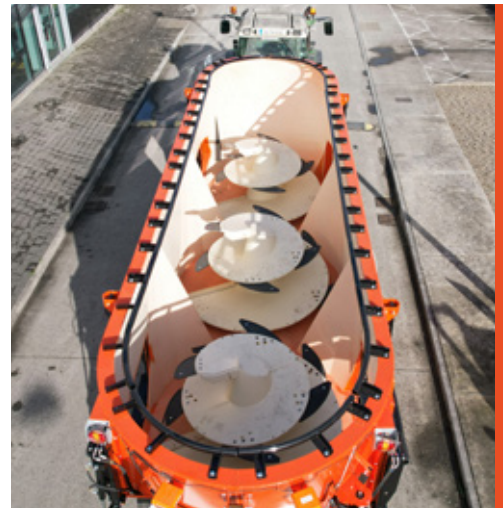


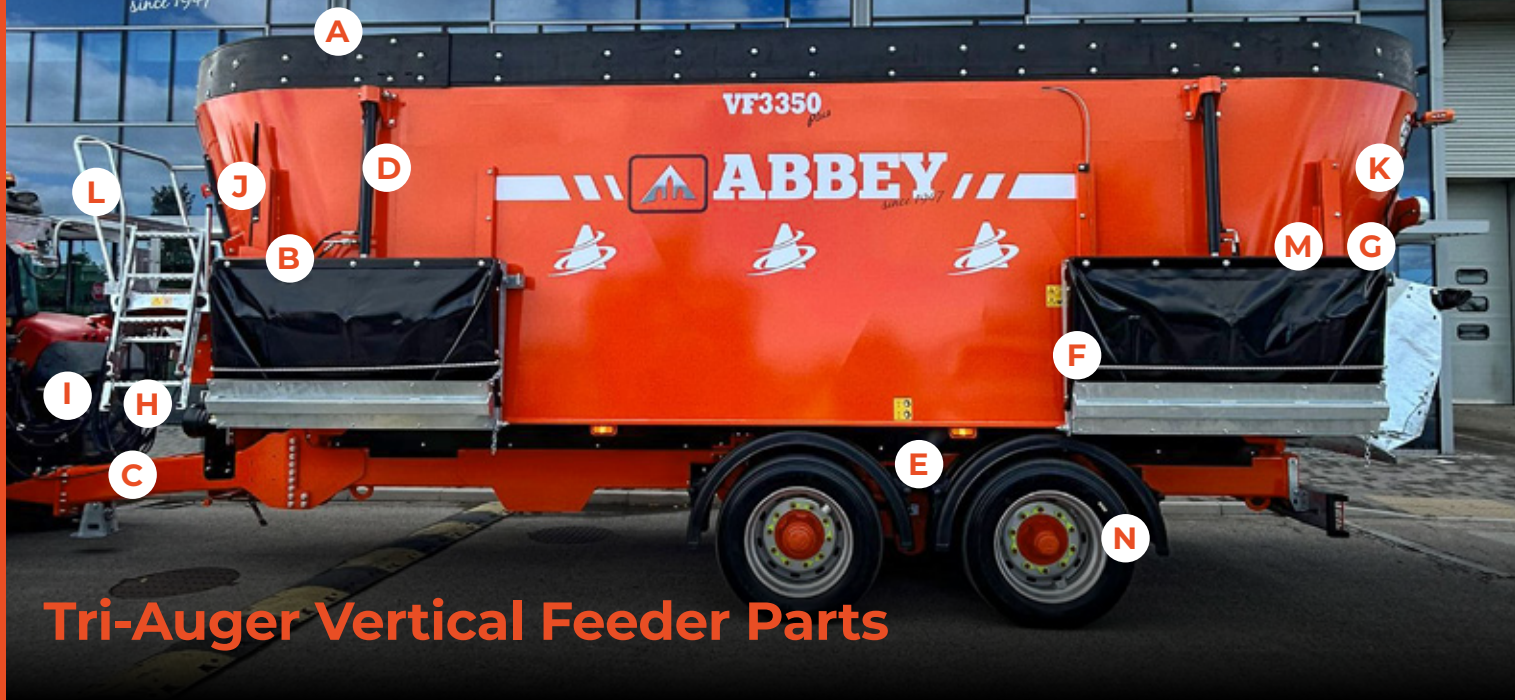
## Tri-Auger Vertical Feeders

Tri-Auger Feeder purpose built to suit large scale operations looking to feed a quality mix in the most economical time possible. Runs with minimal horsepower requirements. Complete with 6 weigh bar system, linking data to proven Digi-Star weighing technology.

Narrow design and self-steering bogie make it extremely manoeuvrable around the yard, the wide feed-out door ensure it empty out rapidly and efficiently.

- » Three vertical 22mm augers
- » Electronic scales - 6 weigh bars
- » 24 x knives & 2 x counter knives
- » Tandem on springs, with steering axle
- » Wide angle PTO shaft with shear bolt protection • Two independent hydraulic discharge doors
- » COMER planetary gear drive
- » Two speed gearboxes
- » Front access platform with folding ladder
- » Digistar Electronic Scales





## Tri-Auger Vertical Feeder Parts



**A: Tri-Auger Tub**  
Tubs are 33.5m<sup>3</sup>.



**C: Independent Chassis**  
Electronic scales with six weigh bars.



**E: Tandem on Springs**  
with steering axle.



**G: Mixing Auger**  
Three vertical 22mm heavy duty augers to ensure perfect blend.



**I: Corner Gearbox**  
Uniquely integrated to the auger for better stability, protection and two speed gear box.



**K: LED Lights**  
To improve visibility.



**M: Knives**  
Serrated knives to ensure a fast and comprehensive blend of all ingredients.



**O: Topcon/Digistar Electronic Scales**



**B: Manually Operated Trays**



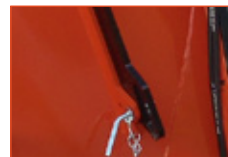
**D: Independent Hydraulic Doors**  
Two discharge doors.



**F: Discharge Conveyors**  
Hydraulic discharge conveyors can be fitted to side door model vertical feeders to allow feed into bunkers.



**H: Wide Angle PTO Shaft (T80)**  
With shear bolt protection.



**J: Counter Blades**  
Hold the material in position, reducing chopping time and wear of the barrel.



**L: Platform**  
Front access platform with folding ladder.



**N: Tyres**  
With 455/40 R22.5 Wheels.



## Plus Range Diet Feeders

Larger herds have greater feeding demands, be it more loads per day or larger load capacities. Abbey Machinery's new 'Plus Range' - VF2450, VF2650, VF2850, and VF3050 models.

- » 50% thicker auger for extended working.
- » Wider base coupled with improved gearbox mounting flange enhance better mixing performance.
- » New horizontal and tilting monitor supporter, which has been designed to keep operators further away from PTO's for added safety.
- » Door design delivers improved flow of material positioning the feed to the centre of the door as it exits the feeder to give a more even and rapid feed-out.
- » Safety platform and folding ladder for easier viewing into the mixing chamber.
- » Option for new parallel tubular top retaining ring to reduce any feed waste during mixing.
- » EZ2810 system indicator is available on feeders and can link to a feed app for added versatility.





## Static Diet Feeder Range

Abbey Machinery offer an exciting new range of Static Mounted electrically driven Feeders for on farm or industrial use.

The Static Diet Feeders offer the capabilities of the Vertical Auger Diet Feeder range in a mounted electrically driven machine.



## Feeder Solutions & Options – Auger Options



### 15MM AUGERS

The 15mm heavy duty auger complete with hard wearing replaceable serrated knives, ensure fast and comprehensive blending of all ingredients.



### 22MM AUGERS

The 22mm heavy duty auger complete with hard wearing replaceable serrated knives, ensure fast and comprehensive blending of all ingredients. 22mm Auger in lieu 15mm Auger for 1650T - 2250T.



### AUGER MAGNETS

Reduce the risk of foreign bodies in feed mix.



### HARDOX LINER

Prolong the life of the mixing chamber.

## Gearbox Options



### COMER GEARBOX

Uniquely integrated to the auger for better stability and protection. The Comer gearbox possess strong torque characteristics ensuring mixers chop and mix efficiently.



### TWO SPEED GEARBOX

Providing increased auger speed and torque. Smooth sounding transfer of drive.



### HYDRAULIC CHANGEOVER

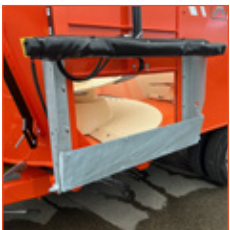
For 2 speed gearbox. Quick, easy speed adjustments over a wide range, while the power source is operating at a constant, more efficient speed.



### WIDE ANGLED P.T.O SHAFT

In lieu of standard. Allows operation at variable angles without the increase in vibration or friction. Allows sharp turns with the PTO still spinning.

## Door Options



### SIDE DOOR

This allows the feed to be discharged to both the right and left simultaneously or individually. Side discharge elevators can be fitted to feed into troughs or bunkers.



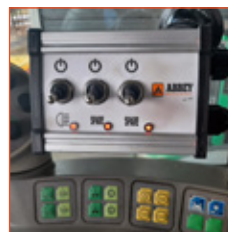
### CABLE CONTROL OPTIONS

3 Bank Valve and 4 Bank Valve with cable options available on front door models only.



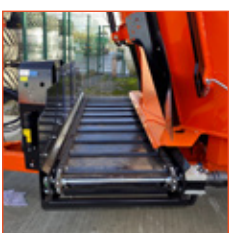
### REAR DOOR

Rear door mixers deliver feed in narrow passages. This machine can feed inside its own width, fitted with twin doors a rear door option model can feed both sides simultaneously.



### ELECTRICAL CONTROL OPTIONS

In-cab switch over in lieu of cables. Electric diverted controls link to the feeder mounted diverter. Machine mounted, low flow digi device function and side discharge elevator options available.



### FRONT DOOR

A slat and chain fixed cross conveyor or a PVC sliding cross conveyor option. Gives the farmer the unique benefits of being able to feed into deep bunkers, over through walls and onto the floor clear of the machine being able to slide out to either the right or left of machine. Option for a Raised Sliding Cross Conveyor.



### FEEDER WEIGH SYSTEM OPTIONS

EZ3610 and TMR software.

## Discharge Options



### HYDRAULIC TRAY

Gives the operator the control of the tray angle which allows for greater reach and assistance with feed discharge. Greater operator comfort removing the need to manual change the tray angle.



### SIDE ELEVATOR

Allows the operator to adjust the discharge angle with the benefit of a powered conveyor. Ideal for people feeding into bunkers or troughs.



### SLIDING FLAT CONVEYOR

Front mounted elevator for the operation with a front door. Slides left and right allowing to feed to either side.



### RAISING CROSS CONVEYOR

Front mounted elevator operational left and right. Hydraulically operator to extend closer to the feed passage. It can be raised up at an angle to allow greater clearance for feeding into bunkers and troughs.



### WINDING JACK

Two and three stage winding Jacks available.



### TOP RETAINING RING

Parallel, tubular and raised top retaining ring options to prevent overflow.



### RUBBER EXTENSIONS

Add on to increase tub capacity.



### RAISERS

50mm, 75mm and 100mm options available.



### MINERAL CHUTE

To support nutrition management plan.



### CAMERA

Reversing camera and brackets available.



### WINDOWS

700mm viewing windows.



### PLATFORM

Front access platform with folding ladder.

## Digistar Weighing System

Herd nutrition is pivotal to reducing health issues, improving milk quality and maintaining a high yielding farm. Total Mixed Rations support each farm with providing the optimal feed mix for each herd. Abbey Machinery Diet Feeders make it extremely simple to implement TMR feeding into your farm program. The DigiStar Weighing System is an intuitive management tool to access and analyse your feed data instantly, everywhere in the world. DigiStar weighing systems are available on all Diet Feeders.

### FEED APP

- » Free and self-explaining available in both GooglePlay & IOS
- » Guest Mode (free) or Register (subscription)
- » Cab control (remote display)
- » Loads (create your digital feed sheets)
- » Create loads and rations
- » Add groups
- » Resize before loading (if needed)
- » Load
- » Scale tracker (remote support)

### 2810 DIGISTAR

- » Large 1.7" (43mm) white backlit COG is easier to read
- » Pre-set Weight function provides improved accuracy and management of loading and unloading
- » Internal "alarm light & horn" alert operator of approaching target pre-set weights
- » Free and self-explaining feed app available to connect through internal Clock Bluetooth and phone Bluetooth

### TMR 3610 - FEED MANAGEMENT INDICATOR

- » Full management capability and USB or DataLinkTM bi-directional data transfer.
- » Program rations at your PC or from the front panel of your indicator
- » Compatible with TMR Tracker® Feed Management Software
- » Internal "alarm light and horn" alerts operator of approaching target weights
- » Make "group call weights" and "head count" changes at the indicator
- » Keeps up-to-date feed changes or reuse data from day-to-day

# Abbey Machinery Diet Feeder Dimensions

Model	Turning Circle, Hitch to Wheel	Overall Length	Tub Height	Tub Top Opening Length*	Overall Height	Wheels Outer Width	Max Overall Width	Discharge Height	Discharge Reach Beyond Wheel	Tub Base to Ground	Fd Sliding PVC Conveyor Std. Reach	Wheel Size as Standard
No. Compared to OEM	1	2	3	4	7	8	14	16	19	20	21	
<b>SINGLE AUGER VERTICAL FEEDER MODEL</b>												
VF800 SD	3.28	4.59	1.65	2.87	2.52	2.20	2.51	0.76	0.30	0.86		400/60-15.5
VF800 RD	3.28	4.65	1.65	2.87	2.52	2.20	2.51	0.59	0.00	0.86		400/60-15.5
VF1000 SD	3.28	4.64	1.83	2.97	2.70	2.20	2.51	0.76	0.30	0.86		400/60-15.5
VF1000 RD	3.28	4.65	1.83	2.97	2.70	2.20	2.51	0.59	0.00	0.86		400/60-15.5
<b>TWIN AUGER VERTICAL FEEDER MODEL</b>												
VF1050 SD	3.28	4.68	1.95	3.03	2.81	2.18	2.52	0.75	0.31	0.84		235/75R17.5
VF1050 RD	3.28	4.68	1.95	3.03	2.81	2.18	2.52	0.57	0.00	0.84		235/75R17.5
VF1250 SD	3.46	4.97	1.96	3.37	2.81	2.18	2.72	0.75	0.41	0.84		235/75R17.5
VF1250 RD	3.46	4.97	1.96	3.37	2.81	2.18	2.72	0.57	0.00	0.84		235/75R17.5
VF1350 SD	3.46	4.99	2.10	3.48	2.96	2.18	2.70	0.75	0.41	0.84		235/75R17.5
VF1350 SDH	3.46	5.06	2.25	3.57	3.11	2.18	2.72	0.75	0.41	0.84		235/75R17.5
VF1350 RD	3.46	5.06	2.10	3.48	2.96	2.18	2.70	0.60	0.00	0.84		235/75R17.5
VF1350 RDH	3.46	5.06	2.25	3.57	3.11	2.18	2.72	0.60	0.00	0.84		235/75R17.5
VF1450 SD	3.46	5.06	2.00	3.58	2.86	2.33	2.86	0.75	0.41	0.84		235/75R17.5
VF1450 RD	3.46	5.06	2.00	3.58	2.86	2.33	2.86	0.57	0.00	0.84		235/75R17.5
<b>TWIN AUGER VERTICAL FEEDER MODEL</b>												
VF Twin1500 SD	4.45	6.54	1.65	4.88	2.52	2.18	2.51	0.75	0.31	0.84		235/75R17.5
VF Twin1650 SD	4.67	6.83	1.80	4.95	2.83	2.23	2.51	0.93	0.28	0.97		435/50X19.5
VF Twin1850 SD	4.67	6.88	1.95	5.03	2.98	2.23	2.51	0.92	0.28	0.97		435/50X19.5
VF Twin2000 Farngard No Rubber Ext	4.65	7.10	1.73	5.49	2.78	2.24	2.71	0.93	0.36	1.00		435/50X19.5
VF Twin2000 Farngard With Rubber Ext	4.65	7.10	2.05	5.72	3.10	2.24	2.71	0.93	0.36	1.00		435/50X19.5
VF Twin2100 SD	4.65	7.14	1.88	5.57	2.91	2.16	2.72	0.93	0.40	0.97		435/50X19.5
VF Twin2250	4.43	7.11	1.95	5.62	3.00	2.39	2.72	0.98	0.30	0.96		435/50X19.5
VF Twin2450	4.88	7.50	2.10	5.72	3.22	2.39	2.72	0.98	0.30	1.11		435/50X19.5
VF Twin2650	4.88	7.71	2.07	6.00	3.18	2.39	2.86	0.98	0.38	1.11		435/50X19.5
VF Twin2850	4.87	7.73	2.17	6.08	3.41	2.41	2.86	1.00	0.37	1.12		435/50X19.5
VF Twin3050	4.87	7.75	2.34	6.19	3.58	2.41	2.86	0.98	0.37	1.12		435/50X19.5
VF3350 Tri-Auger	5.85	9.85	1.95	7.90	3.10	2.47	2.86	0.86	0.51	1.14		455/40X19.5
<b>SINGLE AUGER VERTICAL FEEDER FRONT DOOR MODEL</b>												
VF1050 FD Sliding PVC	3.70	5.25	1.95	3.03	2.93	2.18	2.37	0.77	0.56	0.97		235/75R17.5
VF1250 FD Sliding PVC	3.87	5.53	1.96	3.37	2.93	2.18	2.46	0.77	0.46	0.97		235/75R17.5
VF1350 FDM Sliding PVC Plus	3.87	5.58	2.10	3.48	3.10	2.18	2.46	0.77	0.46	0.97		235/75R17.5
VF1350 FD Sliding PVC Plus	3.87	5.58	2.25	3.48	3.27	2.18	2.46	0.77	0.46	0.97		235/75R17.5
VF1450 FD Sliding PVC	3.87	5.70	2.00	3.58	2.98	2.33	2.59	0.77	0.27	0.99		235/75R17.5

# Abbey Machinery Diet Feeder Dimensions

Model	Turning Circle: Hitch to Wheel	Overall Length	Tub Height	Tub Top Opening Length*	Overall Height	Wheels Outer Width	Max Overall Width	Discharge Height	Discharge Reach Beyond Wheel	Tub Base to Ground	Fd Sliding PVC Conveyor Std. Reach	Wheel Size as Standard
No. Compared to OEM	1	2	3	4	7	8	14	16	19	20	21	
<b>TWIN AUGER VERTICAL FEEDER FRONT DOOR MODEL</b>												
VF1500 FD Sliding PVC	5.01	7.24	1.65	4.89	2.64	2.18	2.32	0.77	0.56	0.99	0.45	235/75R17.5
VF1650 FD Sliding PVC	5.25	7.41	1.80	4.95	2.98	2.23	2.32	0.94	0.52	1.13	0.45	435/50X19.5
VF Twin1850 FD Sliding PVC	5.25	7.45	1.95	5.03	3.13	2.23	2.32	0.95	0.52	1.13	0.45	435/50X19.5
VF Twin2000 Farmgard No Rubber Ext	5.43	7.88	1.73	5.49	2.93	2.24	2.32	0.93	0.42	1.13	0.35	435/50X19.5
VF Twin2000 Farmgard With Rubber Ext	5.43	7.88	2.06	5.49	3.25	2.24	2.32	0.93	0.42	1.13	0.35	435/50X19.5
VF2100 FD	5.44	7.90	1.88	5.57	3.06	2.24	2.32	0.93	0.42	1.13	0.35	435/50X19.5
VF Twin1500 SD	4.45	6.54	1.65	4.88	2.52	2.18	2.51	0.75	0.31	0.84		235/75R17.5
VF Twin1650 SD	4.67	6.83	1.80	4.95	2.83	2.23	2.51	0.93	0.28	0.97		435/50X19.5
VF Twin1850 SD	4.67	6.88	1.95	5.03	2.98	2.23	2.51	0.92	0.28	0.97		435/50X19.5
VF Twin2000 Farmgard No Rubber Ext	4.65	7.10	1.73	5.49	2.78	2.24	2.71	0.93	0.36	1.00		435/50X19.5
VF Twin2000 Farmgard With Rubber Ext	4.65	7.10	2.05	5.72	3.10	2.24	2.71	0.93	0.36	1.00		435/50X19.5
VF Twin2100 SD	4.65	7.14	1.88	5.57	2.91	2.16	2.72	0.93	0.40	0.97		435/50X19.5
<b>TWIN MODEL FRONT DOOR TANDEM AXLE</b>												
VF Twin2250 FD Sliding PVC	5.52	7.88	1.95	5.62	3.17	2.24	2.32	0.99	0.42	1.24	0.35	435/50X19.5
VF Twin2450 FD Sliding PVC	5.46	8.16	2.10	5.72	3.35	2.39	2.32	0.99	0.42	1.24	0.35	435/50X19.5
VF Twin2650 FD Sliding PVC	5.46	8.30	2.07	6.00	3.30	2.41	2.59	0.98	0.42	1.24	0.35	435/50X19.5
VF Twin2850 FD Sliding PVC	5.46	8.32	2.17	6.08	3.41	2.41	2.59	0.98	0.13	1.26	0.25	435/50X19.5
VF Twin3050 FD Sliding PVC	5.46	8.37	2.34	6.19	3.60	2.41	2.59	0.98	0.13	1.26	0.25	435/50X19.5
<b>NEW</b>												
New VF Twin1650 SD	4.70	6.76	1.78	4.80	2.67	2.21	2.51	0.72	0.33	0.83		235/75R17.5
New VF1650 FD Sliding PVC	5.28	7.30	1.78	4.80	2.80	2.21	2.32	0.72	0.33	0.83	0.45	235/75R17.5
<b>Wheels</b>												
	Height	Width	+Machine Height RE: 235/75	Raiser Req'd Suggested	Suitable for Wheel Speeds	Carrying Capacity	Static Loaded Radius					
	mm	mm	mm	mm		kg	mm					
<b>STOCK ITEMS</b>												
235/75X17.5	800	520	0	None	40km/h	3135		40km/h				
400/60X15.5 18pr	890	400	95	50	25km/h	3875		25km/h				
435/50X19.5	930	435	120	100	40km/h	5400		40km/h				420
<b>SPECIAL ORDER ITEMS</b>												
455/40X22.5	940	455	120	100	40km/h	4875		40km/h				433
315/70X22.5	1025	680	225	150	40km/h	4600/pair		40km/h				470